

SOUTH COAST
130 CHERRY AVENUE



ORCHID SOCIETY, INC.
LONG BEACH, CALIFORNIA

MEETS ON THE 4TH MONDAY OF EACH MONTH AT BIXBY PARK CLUB HOUSE

ORCHIDS ARE GRACIOUS LIVING- WEAR THEM!

PROGRAM: August 25, 1969... 15th Annual LUAU...6:00 P.M.

Get out your Hawaiian recipes, muu-muus, Hawaiian shirts and sarongs - it's Luau time. Our Luau chairman Paul Brecht has made arrangements for a bang up evenings entertainment. I don't know exactly what he has planned but judging by his enthusiasm we can expect a lively and entertaining evening. To break a little from our passed offerings there will be no films-ALL LIVE ENTERTAINMENT.

Please bring a meat dish, casserole, salad or dessert (Polynesian, Oriental, or Hawaiian in nature) to serve 12 people and bring your own table service, including a cup. Guests are invited, but be sure to tell them to bring a dish for 12 people.

REMEMBER: Luau starts at 6:00 P.M. and the program begins at 8:00 P.M. Our neighboring societies have been invited to attend. The Luau will be held outside the club house thus you may also wish to bring a sweater or if this weather holds a Bikini would possibly be more in keeping. Be sure to join us for our "Fun Evening" of the year. PRIZES: Awarded for the best 'island costume of the South Seas.'

Incidentally for those of you who bring guests be sure and tell them that membership in S.C.O.S. is now only \$3.00 for the balance of the year.

PLANT PROCUREMENT: Lee Bentzen has promised a fine table made up from donations from Commercial growers, Society Board Members, and Members of the Society. He says that he has been promised some very fine things but this does not preclude any of our good members from donating worth while plants, so bring a few 'shillings' along with you and participate to your hearts content in this part of the program. Might as well get rid of those 'shillings' for England is now joining you Colonials with dollars and cents

PROGRAM PASSED: A real big thank you to Hugo Freed for a most delightful program delivered in his usual inimitable style. Also for a really tremendous plant table. With able support from Southern Calif. Greenhouse and Hagins Orchids you managed to make our Treasurer very happy. Thanks must also be extended to Mrs. Unruh for a very beautiful corsage donated to a guest.

Mr. P. G. Barnett gave a very interesting and informative Novice Class program. It must be pointed out in view of our Luau there will be no Novice Class in August but will resume in Sept.

REFRESHMENTS: The Society will provide meat, rolls, butter, coffee etc. for our Luau meeting. Next month the members will again be asked to donate the refreshments.

RIBBON AWARDS: Judges: Norito Hasagawa, A. G. Tharp, Ed Voelker

- 3 Points Slc. Gratrixae - Small brilliant orange red flowers, Les & Millies Starke
grown in osmunda
2 " Epi. prismatocarpum - Many small flowers with spots. Andy Yamamoto
1 " Onc. lanceanum- Many flowers of rust and lavender Les & Millie Starke
Cult. Phal. cornu-cervi-Extremely well grown and profusion Mr. & Mrs. Crothers
of blooms.

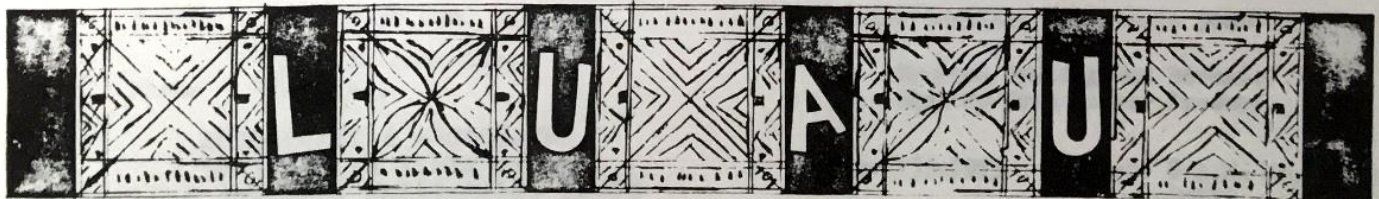
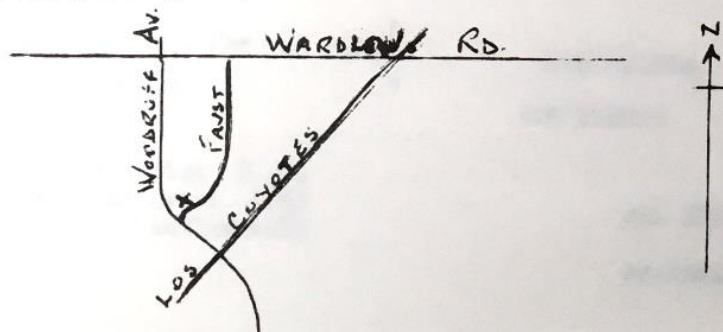
AWARDS: PACIFIC SOUTH SUPPLEMENTAL JUDGING July 28, 1969

Judges present: P.I. Brecht, E.O. Casey, E. W. Charles, Mrs. E. W. Cahrles, Mrs. H. W. Crothers, L. R. DeGarmo, A. E. Falk, R. M. Field, I. Gleason, L. Holguin, J. N. Vidulich, W. C. Wilson. Probationary Judges: C. Aucreman, F. S. Eaton. Student Judges: G. Boyd, H. Whittaker. Clerks: S. L. Bance(sec.) H. Compagnon

- Award #73 L.C. Variation 'Trynwood' HCC 77.5 Don E. Herman Trynwood Orchids
Award #74 P. Rosy Charm x P. Pinochio HCC 75.2 Eugene A. Casey

NOVICE CLASS: Dr. Glass gave a very informative talk on P.H. factor and thanks to his and his wives' hospitality a most enjoyable Sunday morning was spent by all who attended. I goofed last month by not mentioning that Fred and Ann Vaugh joined us at the Alfs' We were extremely happy to see them in such good health and would like to pass their good wishes along to all.

Our next meeting will be at the home of Mr. & Mrs. J. Potter. 3174 Faust ave., Long Beach, Calif. Bring a pot (clay or plastic) and a pot full of your own mix we have lots of divisions for you to pot and to demonstrate what you all have learned from passed demonstrations- Don't forget Sunday Sept. 7, 10:AM, Chair, plant for the table, a friend, pot and potting mix.



S T E W A R T S

**USE AND RECOMMEND THREE DIFFERENT AND
SPECIALLY COMPOUNDED
ORCHID MIXES:**

**CATTLEYA - FOR CATTLEYAS, PHALAENOPSIS
AND MOST BOTANICALS.**

CYMBIDIUM - FOR CYMBIDIUMS

PAPHIOPEDILUM - FOR PAPHIOS (CYPS.)

ALL ARE PRICED AT \$3.75 FOR THE TWO-CUBIC BAG

**WE ALSO CARRY OUR OWN BRANDS OF WATER-SOLUBLE
FERTILIZERS:**

IDEAL (red) -A HIGH NITROGEN FERTILIZER

MOR-BLOOM (blue)- A LOW NITROGEN FERTILIZER

**USE PROVEN PRODUCTS, TAILORED FOR SPECIFIC
JOBS -AND BE SURE**

**Fred A STEWART Inc.
ORCHIDS**

1212 E. Las Tunas Dr.

**San Gabriel, Calif. 91778
(213) 287-8974 (213) 283-4590**

S U P P O R T Y O U R

**FERTILIZERS - INSECTICIDES - FUNGICIDES
SHADE MATERIAL**

**We are your ONE STOP HEADQUARTERS for all your
Orchid Growing Needs.**

**Hi-Bloom 2-10-10 Fertilizer Pint \$.95
Blossom booster for Cymbidium Quart 1.65
Gallon 4.25**

New Item

Cobb's Special Cyp-Cym Potting Mix \$3.50 Bag.

Hours - 9 to 4:30 Mon. thru Fri.

9 to 12 noon Sat.

Phone 465-4146.

**RHEINFRANK & ASSOCIATES
5414 Sierra Vista Avenue
Los Angeles, California. 90038**

THE WELCOME'S ALWAYS FRIENDLY

**at ARMACOST & ROYSTON....
it's a weakness of ours!**

GROWERS of the FINEST in ORCHIDS

Do pays us a visit

**For top Quality Orchid Plants
and Supplies**

OPEN:

7:30 AM to 4:30 PM Mon. to Fri.

9:00 AM to 4:00 PM Sat. & Sun.

(Bring us your Orchid Problems)

ARMACOST & ROYSTON

**2005 Armacost Ave., Direct Line
West Los Angeles. (213) 473-6877
Calif. 90025**

HAGIN'S ORCHIDS

FINE ORCHIDS

ORCHID SUPPLIES

CUT FLOWERS

CUSTOM CORSAGES

**ALL SIZE PLASTIC POTS
AT
REASONABLE PRICES**

**1118 West 126th Street
Los Angeles, California 90044**

**Between Dodlong and Berendo
Minutes from Harbor Freeway**

Phone 755-7953

**Hours 8 A.M. to 8 P.M.
Daily**