

ALFox@concentric.net
Robert Fox

1999 Officers

President	Dick Nerio
1st Vice President	John Reyes
2nd Vice President	Emma Green
Recording Secretary	Margaret Nerio
Membership Secretary	Whitney France
Treasurer	Dr. Jim Miller



The South Coast Orchid Society meets on the fourth Monday of each month except holidays at the Whaley Park Clubhouse, 5620 East Atherton Street, Long Beach, California at 8:00. The American Orchid Society Pacific South Supplemental Judging is held at 7:00.

South Coast Orchid Society

Newsletter

Founded in 1950

September 1999

Board of Directors

Ex Officio	Jimi Fox
Expires 1999	Barbara Sweeney
Expires 1999	Sonora Winward
Expires 2000	Ursula Pontius
Expires 2000	Paul Brecht
Expires 2001	Tony Glinskis
Expires 2001	

Committees

AOS Judging	David Maurer
Programs	John Reyes
Orchid Digest	Charles Bowman
AOS Rep	Ann Wilson
Southland	Sandy Sandberg
Ribbon Judging	
	Bonnie & Chuck Navens
Trophies	David Maurer
Auditor	Dr. Jack Gentry
Newsletter	Barbara Sweeney
Kitchen	Dr. Jim Miller

Shows

Paul Brecht	Charles Bowman
-------------	----------------

Raffle Ticket Sales

Jane Brecht	Emma Green
-------------	------------

For more information contact:

Dick & Margaret Nerio	
714-846-006	MNerio@aol.com
John Reyes	562-431-1142
	PJReyes@earthlink.net
Emma Green	714-534-2460
Whitney France	562-494-3526
	WFrance@aol.com
Dr. Jim Miller	909-244-1492

Stories, articles and news items are welcome. The deadline is the 10th of the month.

Barbara Sweeney
2102-B Clark Lane
Redondo Beach CA 90278-4302
phone and fax: 310-318-5640
e-mail: babsorchid@aol.com
work phone: 310-549-7695
work fax: 310-549-7100

The Lost Species *Epidendrum ilense*

► **Speaker: John Walters**
Monday, Sept. 27th at 8:00

JOHN REYES
Vice President

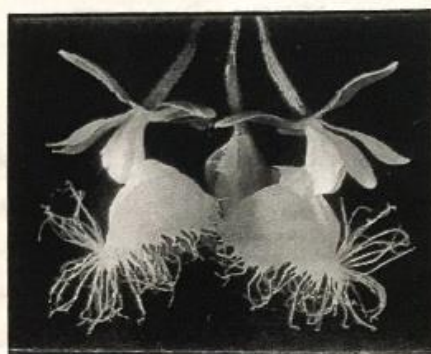
First, I would like to thank Ramona Wilson for her fine presentation and plant table. It is always a pleasure to have her visit our society. Thanks to all the members for supporting our plant tables and providing the orchid displays.

Our September speaker, John Walters of Rex Foster Orchids, developed an infatuation with orchids after seeing them in a Berkeley flower shop with his grandmother. He began a serious study of orchids and sought out California growers who created plants by hybridizing and flasking seed. He has experimented with a number of "alternative" approaches to flasking, including QUAVEE. This is a perlite plus liquid nutrient process which can be used successfully outside of a laboratory; therefore seeds can be grown in the jungle areas where endangered orchids are found.

He has taken orchid conservation seriously and helped collect orchid species for the orchid house at the San Diego Zoo. The zoo has obtained permission to collect animals, birds and orchids in the cutover forest of Papua, New Guinea. He served on the board of Worldwide Conservation Alliance, San Diego County Orchid Society and currently is the orchid representative for Quail Botanical Garden.

Mr. Walters says "Can you believe *Epidendrum ilense* is no longer found in nature? The specimens that you have in your greenhouse may be part of a conservation project that will prevent this beautiful species from becoming completely extinct. This endangered species is no longer found in its native habitat. It is a big job to find out all that may be lost. See the Status Survey and Conservation Plan - Orchids compiled by Alec M. Pridgeon. We will outline a strategy for orchid societies to participate in an exciting approach to orchid conservation. We will also tell you how our epidendrum study is progressing. Mr. Walters will be accompanied by George Tubon who has taken the leadership responsibilities for the epidendrum project at Rex Foster Orchids. We hope that you will 'ENJOY ORCHIDS' with us." The plant table will be provided by Rex Foster Orchids so come and get your raffle tickets early.

Rex Foster Orchids 645 Massachusetts Ave Lemon Grove, CA 91945-3149 619-466-0605



The Illustrated Encyclopedia of Orchids
Edited by Alec Pridgeon

ORCHID EVENTS

September 25-26
SAN DIEGO INTERNATIONAL ORCHID FAIR
DEL MAR FAIR GROUNDS
 2260 Jimmy Durante Blvd. • Del Mar
 Culture Classes 10 - 12 - 2 \$5 Parking Fee
 Sat. 9-5 Sun. 10-3
 Greg Luettkie 760-724-4711

October 2 & 3
ORCHID JAMBOREE
ORCHIDS LIMITED INTERNATIONAL
 407 E. Carson Street • Carson
 Sat. 9-5 Sun. 10-3
 310-549-7695

October 9 & 10
SOUTH BAY ORCHID SOCIETY
"REFLECTIONS OF ORCHIDS" SHOW & SALE
 South Coast Botanic Gardens
 26300 Crenshaw Blvd. • Palos Verdes Peninsula
 Sat. 12-4 Sun. 10-4:30
 Polly Kinsinger 310-374-6471

October 29, 30 & 31
EAST/WEST ORCHID SHOW & SALE
NEW OTANI HOTEL & GARDENS & WELLER COURT
 120 So. Los Angeles St. • Los Angeles
 Fri. & Sat. 10-6 Sun. 10-5:00
 Simone Friend 562-431-1247

November 6 & 7
FALL ORCHID FESTIVAL
UCI ARBORETUM
 Campus Dr. & Jamboree Rd. • Irvine
 south of John Wayne Airport on I-405
 Admission \$2 Laura Lyons 949-824-5833

November 13 & 14
RIVERSIDE/SAN BERNARDINO COUNTIES
ORCHID SOCIETY SHOW
 100 Redlands Mall • Redlands
 Robert Laughlin 909-674-3453

November 22
SOUTH COAST ORCHID SOCIETY
ANNUAL AUCTION
 5620 East Atherton St. • Long Beach
 7:00 PM
 John Reyes 562-431-1142

November 27 & 28
ORCHID SOCIETY OF SANTA BARBARA
FALL SHOW
 Museum of Natural History
 2559 Puesta del Sol Road • Santa Barbara
 Tom Ball 805-967-3503

December 4 & 5
 Watch for news about
 Open Houses taking place at
 orchid nurseries in San Diego County.

February 3-6
FASCINATION OF ORCHIDS SHOW
 Costa Mesa

March 24-26
SAN DIEGO CO. ORCHID SOCIETY SHOW
SAN GABRIEL VALLEY ORCHID HOBBIEISTS SHOW

March 31, April 1 & 2
SANTA BARBARA INTERNATIONAL ORCHID SHOW

Tommie Hanes

The South Coast Orchid Society has unfortunately lost one of our earliest, highly dedicated members. Tommie Hanes has been deeply devoted to us since before her husband John was our fourth president 1955-1956, and long maintained an active interest, as well as offices, in the society. Despite her being distanced recently by advancing age, she kept in touch with her many friends. Tommie's longtime service as an AOS judge included efforts, shared with John and other distinguished AOS and ODC folks, such as Ernest Hetherington and Helen Adams, to bring the current form of AOS judging system into being. In recognition of her contributions, the Pacific South Judging Centers proposed that the AOS Trustees give her Judge Emeritus status, granted gladly in 1992. Tommie lived a long and fulfilling life into her 90th year, at least 65 of them in happy company with John. We are glad to have had her share so much of herself with us these many years, and celebrate the memory of her life in orchids.

Cards may be sent to:

John Hanes
 6264 N. Bion
 San Gabriel, CA
 91775

Paul Bechtel



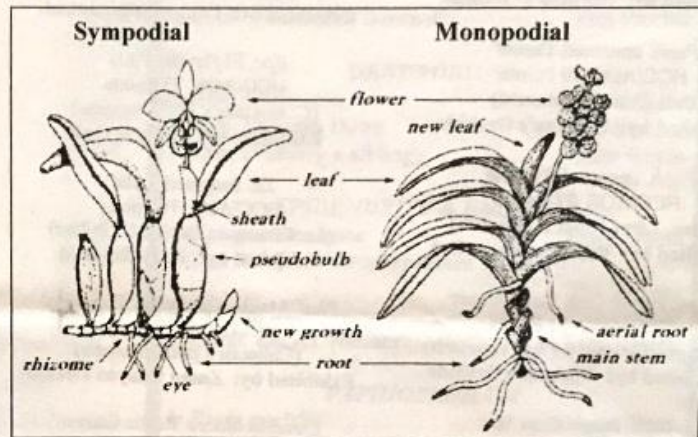
Technical Talk

What is an Orchid?

The **Orchidaceae** is among the largest families of flowering plants. Botanists who study these plants estimate there are from 17,000 to 35,000 species; well-documented reports estimate there are around 20,000 species. Although the largest number of genera and species may be attributed to the sunflower family (Compositae), few would doubt the preeminence of the Orchidaceae in beauty and in the complexity of its flowers and pollination mechanisms.

The orchids also excel in colors, fragrances and size, ranging from microscopic plants (*Platystele*) to long vines (*Vanilla*) to gigantic plants (*Grammatophyllum*). Orchids grow in all terrestrial ecosystems, except in the North and South Poles, but their greatest diversity is found in the tropics. Orchids occur on the ground (**terrestrials**), on rocks (**lithophytes**) and on trees (**epiphytes**); there are even well-documented cases of fully subterranean orchids in Australia. Terrestrial orchids predominate in temperate habitats, epiphytes in tropical habitats.

Orchids may be divided into two fundamental types based on growth habit. **Sympodial** orchids, such as cattleyas and paphiopedilums, are characterized by individual shoots with limited growth. Creeping stems called rhizomes are made of basal portions of successive shoots. Buds give rise to new shoots, each developing to maturity and flowering. Stems of many sympodial orchids develop into storage organs (pseudobulbs), which vary tremendously in size and shape. Shoots of **monopodial** orchids, on the other hand, have unlimited growth, each continuing to produce leaves from the stem apex and inflorescences from between the leaves. Vandas and phalaenopsis are monopodial in habit.



Leaves

Leaves may be tough and leathery (coriaceous) or thin and flexible (membranaceous), can have a single fold at the midline (conduplicate), or be pleated, with several prominent veins (plicate), round in cross-section (terete), or laterally flattened (equitant). With few exceptions (*Epistephium*), the major veins of orchid leaves are more-or-less parallel, as in most other monocotyledons. Most orchids are not grown for their foliage, but the mottled leaves of some paphiopedilums and the iridescent leaves of the jewel orchids (*Ludisia*, *Anoetochilus*) are attractive.

Roots

Roots of epiphytic orchids, and even some terrestrials, have a characteristic epidermis (velamen), which is specialized for protection of interior tissues from water loss and, very likely, for water and mineral uptake also.

Flowers

The Flowers of all orchids are constructed on a certain basic formula. There is an outer whorl of three generally similar segments called **sepals**. In some genera, such as *Paphiopedilum*, the two lateral sepals are fused into one unit, then called the **synsepal**. Within the sepals is another whorl of three segments called **petals**. The median petal is almost always differentiated from the other two by size, color and/or complexity and is called the **labellum** or **lip**. Making up the center of the flowers is the **column**, representing the fusing of elements of the stamens and pistil. Unimaginable variation of the basic floral plan among the thousands of species and their hybrids allows for a never-ending fascination with the orchid family or Orchidaceae.



American Orchid Society

Pacific South Judging Centers

Long Beach CA
July 26, 1999

Ascf. Cherry Blossom 'Damsel Fly'
AM/AOS 80 Points
(*Neof. falcata* x *Asctm. ampullaceum*)
Exhibited by: The Rowland Collection

Epi. Atropine 'FANGtastic'
HCC/AOS 79 Points
(*tampense* x *cordigerum*)
Exhibited by: Norman's Orchids

Paph. unnamed 'Daniel'
HCC/AOS 79 Points
(*Via Quatal* x *Emerald*)
Exhibited by: Norman's Orchids

Paph. unnamed 'Pristine'
HCC/AOS 77 Points
(*Mem. Larry Heuer* x *delenatii*)
Exhibited by: Paphanatics, unLtd.

Dtps. Purple Gem 'Snow Court'
HCC/AOS 77 Points
(*Dor. pulcherrima* x *Phal. equestris*)
Exhibited by: Norman's Orchids

Dtps. Purple Gem 'Ice'
HCC/AOS 77 Points
(*Dor. pulcherrima* x *Phal. equestris*)
Exhibited by: Norman's Orchids

Paph. lantha Stage 'Big Girl'
HCC/AOS 76 Points
(*sukhakulii* x *rothschildianum*)
Exhibited by: Fred W. Clarke

Paph. sangii 'Blood Bath'
HCC/AOS 75 Points
Exhibited by: Paphanatics, unLtd.

Burbank CA
August 9, 1999

Paph. Magic Lantern 'Big Magic'
AM/AOS 82.4 Points
(*micranthum* x *delenatii*)
Exhibited by: Fred W. Clarke

Stanhopea graveolens 'Marshall's Delight'
AM/AOS 81.5 Points
Exhibited by: Harry & Janell Schuck

C. Hawaiian Bride 'Kaitlyn'
HCC/AOS 78 Points
(*Earl* x *Hawaiian Wedding Song*)
Exhibited by: Jim Sloniker

Epc. Atrowalker 'Sunset Valley Orchids'
HCC/AOS 78 Points
(*Epi. cordigerum* x *C. walkeriana*)
Exhibited by: Fred W. Clarke

Paph. godefroyae 'Golden Nugget'
HCC/AOS 78 Points
Exhibited by: Paphanatics, unLtd.

Epc. El Hatillo 'Pinta'
HCC/AOS 77 Points
(*C. mossiae* x *Epi. tampense*)
Exhibited by: Orchids Only

Lc. unnamed 'Lulu'
HCC/AOS 76 Points
(*Lc. Cinnamon Stick* x *C. Shillac*)
Exhibited by: Jerry Rehfield

Phal. Malibu Cinderella 'Zuma Joy'
HCC/AOS 75 Points
(*Culiacan* x *philippinensis*)
Exhibited by: Zuma Canyon Orchids

Govenia lilacea 'Rustic Canyon'
CBR/AOS
Exhibited by: Howard Liebman, MD

Enc. venosa 'Santa Barbara'
CBR/AOS
Exhibited by: Santa Barbara Orchid Estate

Long Beach CA
August 23, 1999

Paph. Umatilla 'All Arow'
AM/AOS 83 Points
(*parishii* x *philippinense*)
Exhibited by: Paphanatics, unLtd.

Paph. Magic Lantern 'Hokus Pokus'
HCC/AOS 78 Points
(*micranthum* x *delenatii*)
Exhibited by: Paphanatics, unLtd.

Wils. Sarah Friedland 'Howard's Pride'
HCC/AOS 76 Points
(*Odcdm. Solana* x *Oda. Janis Andrew*)
Exhibited by: Jerry Rehfield

Burbank CA September 13, 1999

Odm. Stamfordiense 'Lulu'
AM/AOS 85 Points
(*bictoniense* x *uro-skinneri*)
Exhibited by: Jerry Rehfield

Dtps. Pixie Star 'Jamboree Ruby'
AM/AOS 83.5 Points
(*Phal. Joyful* x *Dor. pulcherrima*)
Exhibited by: Paphanatics, unLtd.

Doritis pulcherrima 'Zuma Royalty'
AM/AOS 81.5 Points
Exhibited by: Zuma Canyon Orchids

Cattleya forbesii 'Equilab'
AM/AOS 81 Points
Exhibited by: Stewart Orchids

Neofinetia falcata 'Omega'
HCC/AOS 79 Points
Exhibited by: Ken Fujimoto

Odm. povedanum 'Rustic Canyon'
HCC/AOS 78 Points
Exhibited by: Howard Liebman, MD

Lc. Aloha Case 'Diana'
HCC/AOS 76 Points
(*Mini Purple* x *C. walkeriana*)
Exhibited by: Jerry Rehfield

Phal. Neon Magenta 'Purple Glow'
HCC/AOS 75 Points
(*Andalusia* x *Red Devil*)
Exhibited by: Eric Goo and Phoenix Orchids

Phal. Ruth Tauscher 'Ruby Red'
HCC/AOS 75 Points
(*Spirit House* x *Zuma Garnet*)
Exhibited by: Eric Goo and Phoenix Orchids

Cattleya maxima v. semi-alba 'Mariza'
JC/AOS
Exhibited by: Stewart Orchids

Odm. povedanum 'Rustic Canyon'
CHM/AOS 80 Points
Exhibited by: Howard Liebman MD

Sobralia decora 'Santa Barbara'
CHM/AOS 80 Points
Exhibited by: Santa Barbara Orchid Estate

Den. aduncum 'Amore Mio'
CCM/AOS 83 Points
Exhibited by: Ginny Worthington

Notes

Welcome New Members!

James Calley
1817 East 3rd Street
Long Beach, CA 90802-3937
562-436-0877

Theodore (Ted) Johnson
752 Scott Place #B
Costa Mesa, CA 92627-3504
714-642-2209

Cindy Puentes
2259 Josie Ave.
Long Beach, CA 90815-2337
562-493-2076

Address Correction

Dr. A. G. Tharp
11748 206th Street
Lakewood, CA 90715-1375

Add new e-mail addresses

Thamina Haque haq10@earthlink.net

Marilyn Levi levycmmj@aol.com

Rey Lobo giveasmile@hotmail.com

Red & Trudi Marsh, Truford Orchids
ffordyce@slip.net

Janell Schuck janell.schuck@home.com

Ed Wise, Edwin Wise Lab & Orchids
orchid@cosmolink.net

Our Guests in August

Gordon & Carolyn Gray of Long Beach
Please come back and visit us again soon.

Mark your calendar: December 20th
Our end-of-the-year holiday party will be on the
3rd Monday in December instead of the 4th.

Thank you to Paul & Jane Brecht for
donating plants to our silent auction.

South Coast Orchid Society Ribbon Judging Aug 23, 1999



CATTLEYA

- | | |
|--|--------------|
| 1. <i>Pot.</i> Morning Magic | Phil Plocher |
| 2. <i>Slc.</i> Seagull's Delight | Espie Quinn |
| 3. <i>Slc.</i> Orglade's Early Harvest | Bruce White |

CYMBIDIUM

- | | |
|-------------------------------------|--------------|
| 1. <i>Cym.</i> <i>dayanum</i> | Phil Plocher |
| 2. <i>Cym.</i> Golden Elf 'Sundust' | Phil Plocher |

DENDROBIUM

- | | |
|-------------------------------------|--------------|
| 1. <i>Den.</i> Hagoromo | Rita Sutphin |
| 2. <i>Den.</i> Precious Dawn | Pat Stevens |
| 3. <i>Den.</i> (Pinterry x sibling) | John Reyes |

EPIDENDRUM & ENCYCLIA

- | | |
|--|--------------|
| 1. <i>Epi.</i> <i>guatemalense</i> | Espie Quinn |
| 2. <i>Epi.</i> Atropine (<i>atropurpureum</i> x <i>tampense</i>) | Pat Stevens |
| 3. <i>Epi.</i> <i>difforme</i> | Phil Plocher |
| Cultural. <i>Encycl.</i> <i>radiata</i> | Espie Quinn |

PAPHIOPEDILUM

- | | |
|------------------------------------|--------------|
| 1. <i>Paph.</i> <i>parishii</i> | Charlie Mack |
| 2. <i>Paph.</i> <i>Harrisianum</i> | Rita Sutphin |

PHALAENOPSIS

- | | |
|---|--------------|
| 1. <i>Dpts.</i> Debbie Richard
(<i>Phal.</i> Norman's Mist x <i>Dpts.</i> Orglade's Puff) | Phil Plocher |
| 2. <i>Phal.</i> Maki Watanabe | Charlie Mack |
| 3. <i>Phal.</i> Ember 'Zuma's Diablito' AM/AOS | Phil Plocher |
| Cultural. <i>Dpts.</i> Debbie Richard | Phil Plocher |

VANDA

- | | |
|--|--------------|
| 1. <i>V.</i> <i>sanderiana</i> | Charlie Mack |
| 2. <i>Ascda.</i> Yip Sum Wah | Phil Plocher |
| 3. <i>Angcm.</i> (<i>superbum</i> x Longiscott) | Pat Stevens |
| Cultural. <i>V.</i> (Keeree x Phairot x Gordon Dillon) | Rita Sutphin |

Thank you to our judges:

Sonora Winward, Phil Plocher, Espie Quinn,
Bruce White & Barbara Sweeney



Orchids Limited International

Jimi Fox
Hybridizer/Grower

Phone: (310) 549-7695
E-mail: worldorkid@aol.com

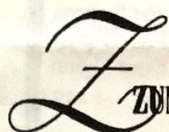
407 E. Carson Street
Carson, California
90745-2712

FAX: (310) 549-7100
Website: www.worldorchids.com



Ernie Campazano

821 W. Ballina Court
Thousand Oaks, Ca. 91302
(805) 498-2077



ZUMA CANYON ORCHIDS

GEORGE VAZQUEZ
Vice President

5949 Bonsall Drive
Malibu, California 90265

Tel 310-457-9771
Fax 310-457-4783

Refreshments

Chuck & Joan Trout
Greg & Nancy Truex
George Vazquez
Steven & Debra Vendt
John & Margaret Vidulich
Charles Weckerle-Thrun
Dave & Sue Weinstein
Jim Weiss
Bruce & Carol White
Homer & Gloria Wildharber
Ann Wilson
Sonora Winward
Ed & Donna Wise
Ginny Worthington

September 27th

If you cannot bring goodies please call
Jim Miller 909-244-1492

If you bring refreshments you will be given a
special raffle ticket. One of these tickets
will be the first picked for a plant on the raffle
table. Even though your name is not on this
month's list you may bring refreshments for
any meeting and receive a ticket.

Bill Bailey's Orchids
Bill & Jane Bailey
1715 Via Arriba
Palos Verdes Estates, CA 90274
310-378-6066

Brecht's Orchid Garden
Paul & Jane Brecht
1989 Harbor Blvd.
Costa Mesa, CA 92627
949-548-2314

Marcel's
Sonora Winward
5133 Killdee St
Long Beach, CA 90808
562-496-0690

Starbek Farms
Jerry & Louella Rehfield
7305 Shepard Mesa
Carpinteria, CA 93013
805-684-3344

Butterfly Orchids
Ernie & Celia Campuzano
821 West Balina Ct.
Thousand Oaks, CA 91320
805-498-2077

Maril Products, Inc.
Tom & Anne Whitehair
620 South B St.
Tustin, CA 92680
714-544-7711

Swift's Orchids
Richard Swift
5660 Peridot Ave.
Alta Loma, CA 91701
909-987-9355

Daniger Orchids
Ned Daniger
17351 Nordhoff St
Northridge, CA 91325
818-349-6526

Norman's Orchids
Norman Fang
11039 Monte Vista Ave
Montclair, CA 91763
909-627-9515

TKO Exotics
Joe & Cindy Francisco
8963 Tyler St
Spring Valley, CA 91977
619-463-7072

Dragonstone Orchids
Paul Bechtel
P.O. Box 348
Redlands, CA 92373
909-792-2553

Orchids Limited Intl.
Jimi Fox
407 E. Carson St.
Carson, CA 90745
310-549-7695

Truford Orchids
Fordyce (Red) & Trudy Marsh
26049 Mulholland Hwy.
Calabasas, CA 91302
805-880-4050

Luetticke Orchids & Lab
Gregg Luetticke
1329 Lake Dr
Encinitas, CA 92009
760-724-4711

The Rowland Collection
Pat Rowland
12446 Georgian St.
Garden Grove, CA 92841
714-892-3502

Zuma Canyon Orchids
Amato & George Vasquez
5949 Bonsall Dr
Malibu, CA 90265
310-457-9771

**We wish to thank the following commercial
vendors for their generosity and support.**



**5th ANNUAL SAN DIEGO
International Orchid Fair**

DEL MAR FAIR GROUNDS
2660 Jimmy Durante Boulevard
Del Mar, CA

September 25-26, 1999
Saturday 9-5 pm / Sunday 10-4 pm

Admission is FREE

Parking is \$5.00 *per car*, so fill up your car with friends!

☆ AOS, CSA and Ribbon Judging ☆
Plant Registration: 12 - 5 p.m. Friday & 7 - 8 a.m. Saturday
Judging 9 a.m. Saturday

Culture Classes on Saturday and Sunday
10 a.m. (kids' class) - 12 p.m. - 2 p.m.
Orchid Exhibits and Sales Area

ORCHID SHOW



The South Bay Orchid Society

Presents its 19th Annual Fall Show & Sale

"Reflections of Orchids"

Saturday & Sunday, October 9th and 10th, 1999

*South Coast Botanic Garden
26300 Crenshaw Boulevard
Palos Verdes Peninsula*

*Show & Sale Hours: 12:00 Noon - 4:30 PM, Saturday
10:00 AM - 4:30 PM, Sunday*

*Admission to Botanic Garden: \$5.00
Seniors & Students with ID: \$3.00*

No additional charge for Orchid Show and Sale

Proceeds benefit the South Coast Botanic Garden



ORCHID JAMBOREE!

SAT, OCTOBER 2ND 9 AM - 5 PM
SUN, OCTOBER 3RD 10 AM - 3 PM

VENDORS, VENDORS, VENDORS!

**WE WILL BE ALL DECKED OUT IN
CATTLEYS, PHALAENOPSIS, DENDROBIUMS,
VANDAS, EPIDENDRUMS AND MUCH MORE!**

Orchids Limited International
407 EAST CARSON STREET
CARSON, CALIFORNIA 90745-2712
PH: (310) 549-7695
FAX: (310) 549-7100
E-MAIL: WORLDORCHID@aol.com
A Division of World Orchid Financial Corporation



**EAST WEST
ORCHID SHOW and PLANT SALE**
at

NEW OTANI HOTEL & GARDENS and WELLER COURT
120 Los Angeles Street, Los Angeles, CA

Oct. 29, 30 & 31, 1999

Presented by

**EAST-WEST DEVELOPMENT CORPORATION
THE NEW OTANI HOTEL & GARDENS
AND SOUTHLAND ORCHID SHOW COMMITTEE, INC.**

Enjoy the beautiful displays themed
"CALIFORNIA ORCHID RUDE"
in the elegant surroundings of the New Otani Hotel.
There will be AOS and CSA judging, lectures, demonstrations,
and a large sales area offering varieties of orchid plants from U. S. and
International growers.

Open to the public, no admission charge.

SHOW HOURS: Fri. & Sat., October 29 & 30: 10 AM - 6 PM
Sunday, Oct. 31: 10 AM - 5 PM

For further information, contact: Simone Friend:
(714) 593-4413 • Fax: (714) 593-4505

Visit www.orchidshow.org FOR DETAILS ABOUT THE ORCHID SHOW

Brecht's Orchid Gardens

1989 Harbor Blvd. Costa Mesa (949) 548-2314
Open 9:30 to 5:00 Tuesday through Saturday

Plants • Baskets • Gifts • Pots
Complete Orchid Supplies

Visit Our Beautiful Gardens
Take Care of All of Your Orchid Needs

Vandas, Dendrobiums and many spray types are shipped weekly from Hawaii.
Cymbidiums from Orchids Royale in Carpinteria.
Phalaenopsis from Nurseryman's Exchange.
Stewart's Cattleyas when available.

Stewart's Cymbidium Potting Mix

2 cubic ft. Bag - \$10.95

3/4 cubic ft. Bag - \$4.95 Hobby Bag - \$2.95

Also Available - Cattleya Mix & Cymbidium Top Dressing

Stewart's Red Fertilizer (21-14-14)

One Fertilizer for all Seasons. No more guessing.

Largest Flowering Orchid Selection
In Orange County!
Friendly & Knowledgeable Staff
Expert Repotting Service
Excellent Boarding Facilities

South Coast Orchid Society

Barbara Sweeney, Newsletter Editor
2102-B Clark Lane
Redondo Beach, CA 90278-4302



THE LOST SPECIES

SPEAKER: JOHN WALTERS

MONDAY, SEPT. 27TH AT 8:00PM



||..||

90278-4302

